



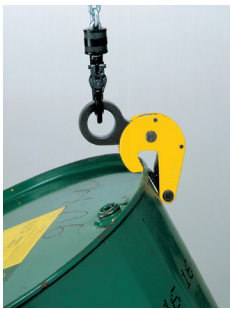
DC500 Drum clamp

Working load limit (WLL) 500 kg

The DC500 drum clamp has been designed to lift and transport steel drums. If moving empty or sealed drums, one clamp is sufficient. If lifting an open full drum, two clamps should be used with a two leg chain sling.

This clamp is extremely light weight and very quick and easy to use.

Product group: I2



INFO

For use with steel drums only

Chain slings are not supplied.



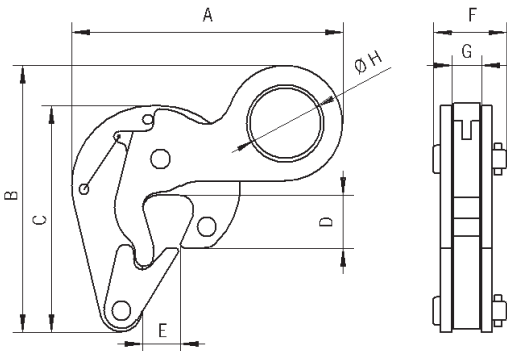
Technical data DC500

Model	Art.-No.	*WLL kg	*Weight kg
DC500	N52203456	500	1.2

*Per clamp

Dimensions DC500

Model	DC500
A, mm	152
B, mm	150
C, mm	127
D, mm	30
E, mm	21
F, mm	41
G, mm	17
Ø H, mm	40



DCV500 Vertical lift drum clamp

Working load limit (WLL) 500 kg

The DCV500 drum clamp has been designed to lift and transport steel drums in the vertical position. One clamp can be used to lift drums with or without their lids by gripping the rim of the drum.

Its light weight and small overall design makes it ideal for picking up drums that sit tightly on pallets. The centre of gravity of the drum is below the lifting point during transportation.

Product group: I2



INFO

For use with steel drums only

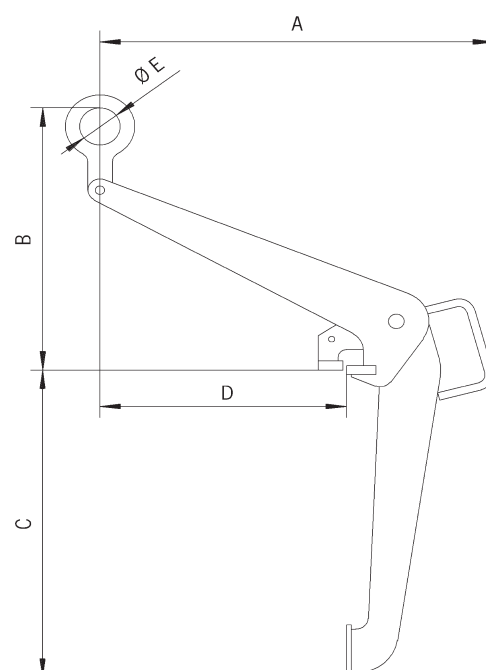


Technical data DCV500

Model	Art.-No.	WLL kg	Weight kg
DCV500	N52203455	500	7

Dimensions DCV500

Model	DCV500
A, mm	479
B, mm	350
C, mm	410
D, mm	300
Ø E, mm	50





DBT300 drum grab

Working load limit (WLL) 300 kg

The DBT drum grab with tipping device has been designed for the transportation, lifting, placing down, turning over and emptying of barrels.

In order to tip the drums easily, they must be picked up at the correct centre of gravity.

Product group: I4

INFO

This grab is designed for use with steel drums only.

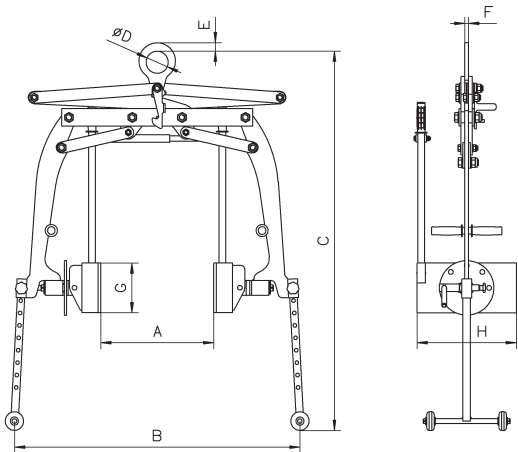


Technical data DBT300

Model	Art.-No.	WLL kg	Jaw capacity Z diameter mm	Weight kg
DBT	N52203404	300	400 - 600	83

Dimensions DBT

Model	DBT
A, mm	600
B, mm	1150
C, mm	1525
Ø D, mm	90
E, mm	34
F, mm	15
G, mm	200
H, mm	400



DA/DAF low headroom drum grabs

Working load limit (WLL) 350 kg

The DA drum grab is designed for the vertical transportation of steel drums. The jaws grab under the lip of the drum with its form-fitting connection.

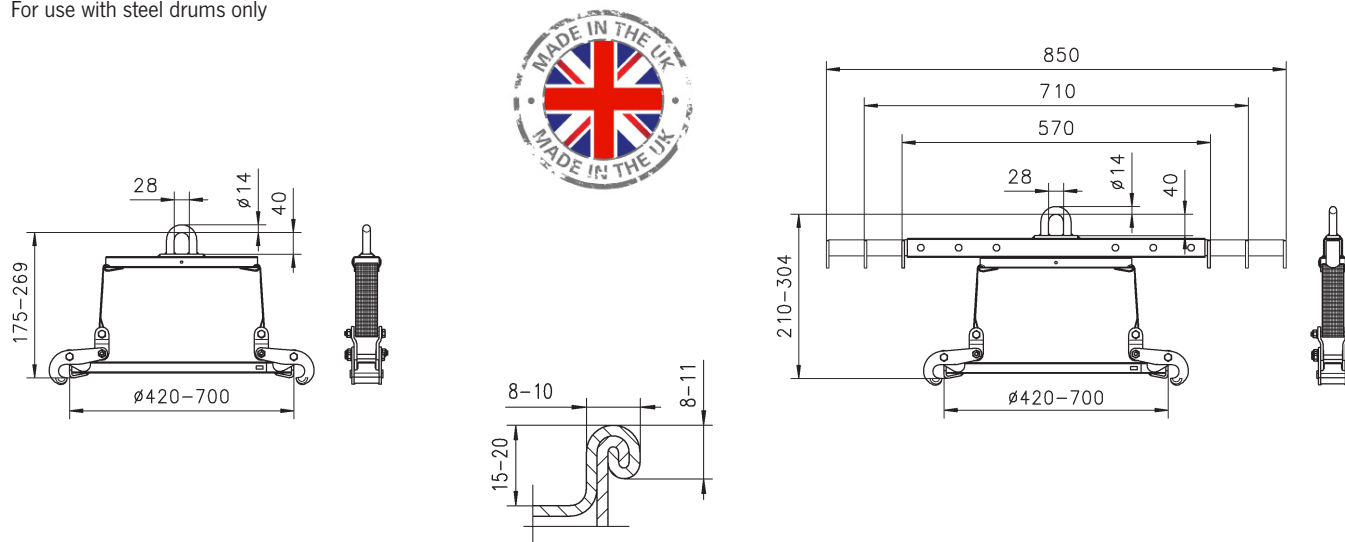
The DAF drum grab works on the same principle as the DA grab, but has the added benefit of adjustable arms that can be used with a forklift.

Product group: I2



INFO

For use with steel drums only



Relevant barrel dimensions

Technical data DA/DAF

Model	Art.-No.	WLL kg	Jaw capacity diameter mm	Weight kg
DA	N52303561	350	420 - 700	3.5
DAF	N52303562	350	420 - 700	6.0