

## PP Pile pulling clamps

Working load limit (WLL) 3000 - 8000 kg

The PP pile pulling clamps are designed to pull out driven piles or trench shielding. The clamps have a narrow opening and a deep slot to ensure that the pile is gripped firmly. It is extremely difficult to determine the forces required to pull out driven piles, so it is recommended that a load indicator is used to ensure the WLL of the clamp is not exceeded.

The PP clamp is supplied as standard with a double locking mechanism to ensure that the clamp remains locked on and cannot become unlocked during the extraction of the pile.

Product group: I2



## INFO

Shackles are not included on PP clamps.

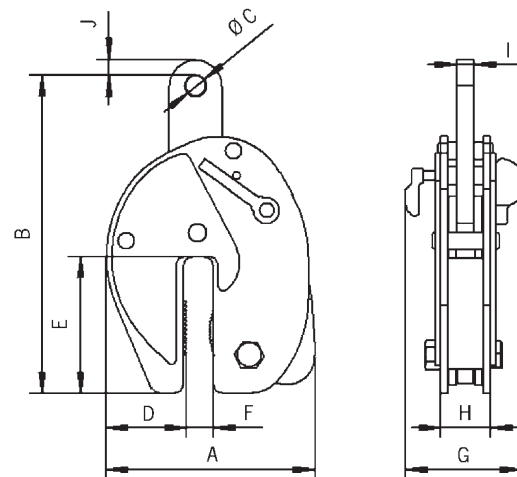


## Technical data PP

| Model | Art.-No.  | WLL<br>kg | Jaw capacity<br>mm | Throat depth<br>mm | Weight<br>kg |
|-------|-----------|-----------|--------------------|--------------------|--------------|
| PP3   | N51502418 | 3000      | 0 - 16             | 147                | 12           |
| PP8   | N51502416 | 8000      | 0 - 30             | 194                | 28           |

## Dimensions PP

| Model   | PP3 | PP8 |
|---------|-----|-----|
| A, mm   | 224 | 294 |
| B, mm   | 325 | 445 |
| Ø C, mm | 20  | 30  |
| D, mm   | 88  | 109 |
| E, mm   | 147 | 194 |
| F, mm   | 25  | 42  |
| G, mm   | 123 | 146 |
| H, mm   | 60  | 72  |
| I, mm   | 20  | 25  |
| J, mm   | 18  | 26  |





CP Pile pitching clamps

Working load limit (WLL) 2000 - 5000 kg

The CP pile pitching clamps are specifically designed for pitching sheet steel piling. These clamps come fitted with a 15 metre length of rope which allows the clamp to be released from the ground. The clamp comes fitted as standard with a shackle.

Product group: I2



INFO

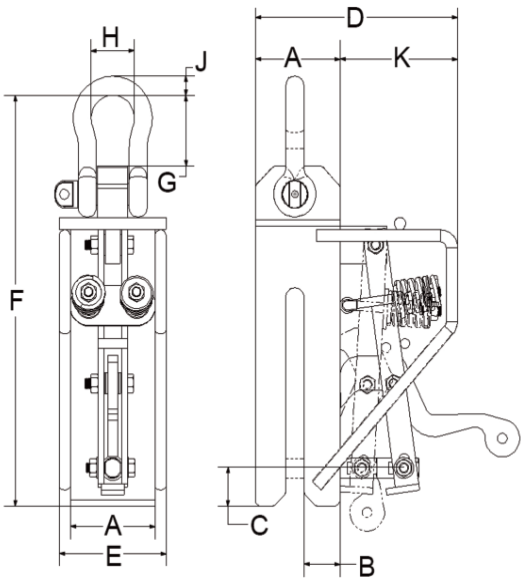
These clamps are not designed for extracting driven piles.

Technical data CP

| Model | Art.-No.    | WLL<br>kg | Jaw width<br>mm | Throat depth<br>mm | Pin<br>diameter<br>mm | Weight<br>kg |
|-------|-------------|-----------|-----------------|--------------------|-----------------------|--------------|
| CP2   | N4300000067 | 2000      | 20              | 228                | 20                    | 19           |
| CP3   | N4300000068 | 3000      | 26              | 228                | 30                    | 22           |
| CP5   | N4300000070 | 5000      | 35              | 228                | 30                    | 28           |

Dimensions CP

| Model | CP2 | CP3 | CP5 |
|-------|-----|-----|-----|
| A, mm | 90  | 100 | 115 |
| B, mm | 38  | 40  | 45  |
| C, mm | 38  | 38  | 38  |
| D, mm | 215 | 225 | 240 |
| E, mm | 114 | 124 | 139 |
| F, mm | 411 | 438 | 477 |
| G, mm | 71  | 91  | 117 |
| H, mm | 46  | 63  | 82  |
| J, mm | 19  | 25  | 32  |
| K, mm | 200 | 200 | 200 |



## BTG Concrete pipe lifting clamps

Working load limit (WLL) 1500 - 3000 kg

The BTG concrete pipe lifting clamps are sold in sets of three, and they come complete with a 3-legged chain sling (the working load limits shown are based on a set of three clamps).

They are designed for the vertical transportation of concrete pipe sections with a diameter of up to 2000mm.

Attachment and removal of the clamps from the pipes is extremely easy due to the simple and straightforward design.

### Features

- Solid design
- Safety factor 4:1
- Simple and safe handling
- Large jaw capacity
- For the toughest operating conditions

Product group: I4

## INFO

For concrete pipes according to DIN 4034.



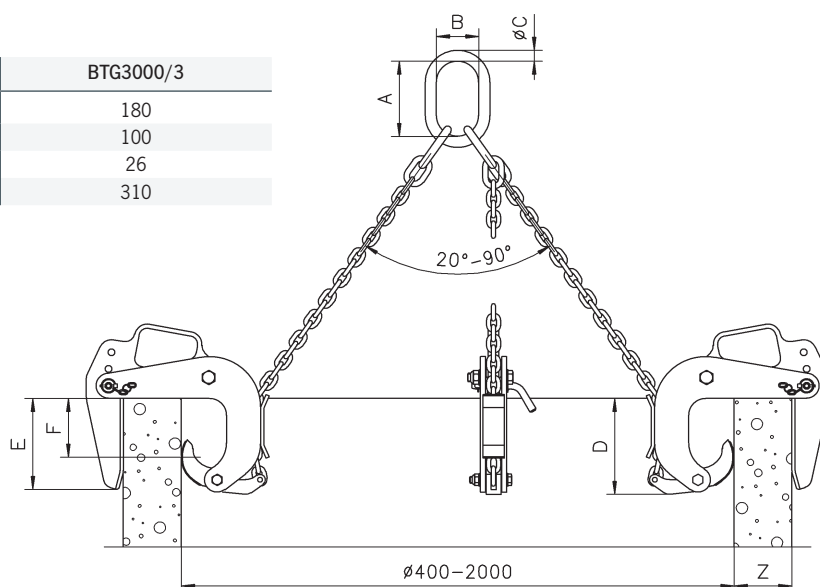
### Technical data BTG

| Model     | Art.-No.  | *WLL<br>kg | Jaw capacity Z<br>mm | Mouth depth E<br>mm | Pressure line F<br>mm | Chain Ø<br>mm | *Weight<br>kg |
|-----------|-----------|------------|----------------------|---------------------|-----------------------|---------------|---------------|
| BTG1500/3 | N54609200 | 1500       | 40 - 120             | 165                 | 100                   | 6             | 34            |
| BTG3000/3 | N54609204 | 3000       | 50 - 180             | 245                 | 175                   | 10            | 60            |

\*Per lifting gear - three legged

### Dimensions BTG

| Model   | BTG1500/3 | BTG3000/3 |
|---------|-----------|-----------|
| A, mm   | 135       | 180       |
| B, mm   | 75        | 100       |
| Ø C, mm | 18        | 26        |
| D, mm   | 180       | 310       |





## PH Pipe hooks

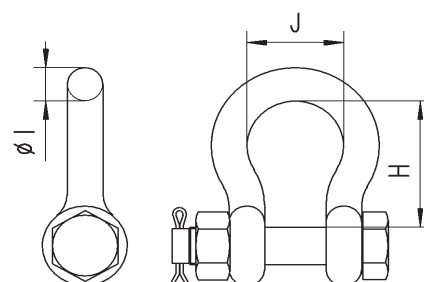
Working load limit (WLL) 2000 - 10000 kg

The PH pipe hooks are used in pairs for the safe transport of pipes.

Product group: I2

## INFO

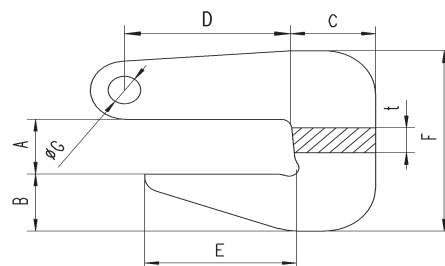
The shackles are included with the hooks, but the chains are not supplied.



60° - 90° Chain top angle / 30° - 45° from vertical

| Model  | Art.-No.  | *WLL<br>kg | Pipe wall thickness<br>kg | *Weight<br>kg |
|--------|-----------|------------|---------------------------|---------------|
| PH2/A  | N53508004 | 2000       | 0 - 40                    | 2.4           |
| PH4/A  | N53508005 | 4000       | 0 - 50                    | 5.6           |
| PH6/A  | N53508006 | 6000       | 0 - 60                    | 8.3           |
| PH8/A  | 192048192 | 8000       | 0 - 70                    | 13.5          |
| PH10/A | N53508008 | 10000      | 0 - 80                    | 17.8          |

\*Per pair



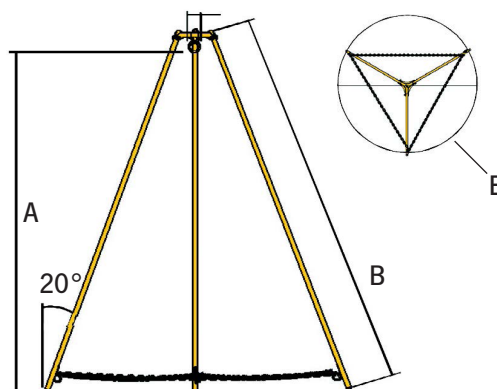
## SL Shearlegs

Working load limit (WLL) 500 - 3000 kg

The Camlok Shearlegs have been designed to be simple, easy to erect and operate. Each set of shearlegs are supplied fitted with safety chains and a large eyebolt for the suspension of hand operated lifting devices.

These shearlegs must not be used for lifting personnel.

Product group: I4



## Technical data SL

| Model     | Art.-No.<br>standard (spike) | Art.-No.<br>flat (rubber lined) | WLL<br>kg | A<br>mm | B<br>mm | E<br>mm | Weight<br>kg |
|-----------|------------------------------|---------------------------------|-----------|---------|---------|---------|--------------|
| SL0.500/2 | N4300000262                  | N4300012471                     | 500       | 2000    | 2254    | 1800    | 24           |
| SL1000/2  | N4300000256                  | 192034214                       | 1000      | 2000    | 2276    | 1816    | 33           |
| SL1000/3  | N4300000257                  | 192059776                       | 1000      | 3000    | 3340    | 2544    | 44           |
| SL2000/3  | N4300000258                  | N4300015297                     | 2000      | 3000    | 3366    | 2554    | 71           |
| SL3000/3  | N4300014414                  | N4300013638                     | 3000      | 3000    | 3409    | 2730    | 88           |