



## CR Single rail clamps

Rail grab with safety lock

Working load limit (WLL) 1000 - 2000 kg

The CR rail clamps are designed to lift single rails securely and safely.

The clamps are designed to fit most types of rail section currently in use. The clamps have a narrow profile to enable attachment to an individual rail when rails are side by side.

The clamps are locked onto the rail-head via a lever operated spring mechanism. It is recommended to use clamps suspended from a lifting beam for long rail lengths.

Clamps can be supplied with a short length of chain and lifting eye. This must be specified at the time of order.

Product group: I2

## INFO

For special sizes please advise rail section and profile.



Typical application shots above showing a CR1000 in use with a Yale D85 Pul-lift and an 'Ironman' or left attached to YaleErgo 360 Ratchet Lever Hoist



## Technical data CR

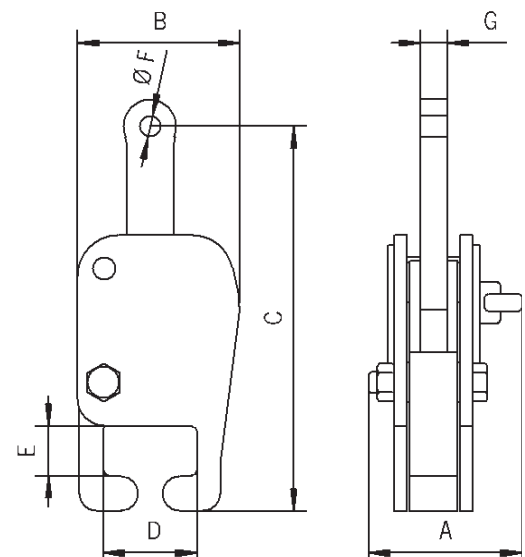
Model	Art.-No.	Number of rails	*WLL kg	*Weight kg
CR1000 (std)	N51402351	1	1000	13
CR2000 (std)	N51402352	1	2000	15
CR1000 (with chain)	N430000073	1	1000	16
CR2000 (with chain)	N430000075	1	2000	18

\*Per clamp

## Dimensions CR

Model	CR1000	CR2000
A <sup>1</sup> , mm	144	144
B, mm	152	163
C, mm	350	350
D, mm	90	90
E, mm	46	46
Ø F, mm	20	20
G, mm	25	25

<sup>1</sup>Scissor dimensions



## MR Fixed multi-rail grabs

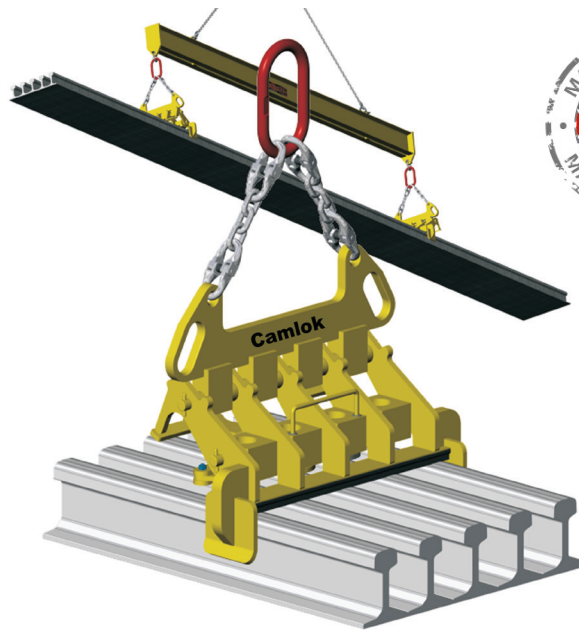
Working load limit (WLL) 5000 - 8000 kg

The MR Multi-rail grabs have been designed to facilitate the fast bulk handling of a specific rail section (details to be advised at time of order).

The grabs are locked onto the rails by swivelling toes that locate under the rail-head and top clamp body that rotates in a cam action, pressing a hard rubber lined horizontal beam onto the top of the rail-head. The rubber lined contact beam prevents marking or damage.

Two clamps are recommended at centres of 50% to 60% of rail length for rails up to 20 mtr long. For rails longer than 20 mtr., three clamps at centre distance between outer clamps of 65% to 75% of rail length must be used. (NB. Clamps must be within rated WLL).

Rails to be lifted must be stacked with bottom flange toes touching. All rails must be of the same rail section size.



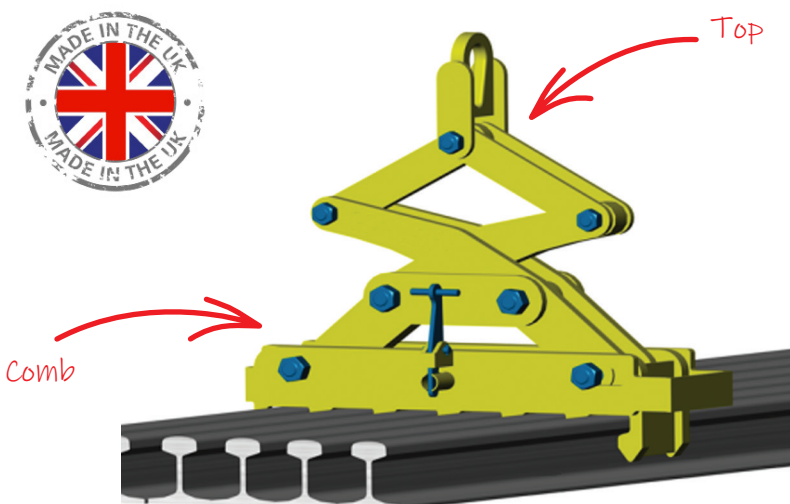
Product group: I3

### Technical data MR

Model	Number of rails	*WLL kg	*Weight kg
MR3	3	5000	84
MR4	4	5000	108
MR5	5	5000	132
MR6	6	6000	156
MR7	7	7000	180
MR8	8	8000	204

Please advise rail section when ordering.

\*Per grab



## MRC Interchangeable multi-rail grabs

Working load limit (WLL) 5000 - 8000 kg

The MRC Multi-rail grabs have been designed to facilitate the fast bulk handling of rail sections.

The features and applications of the MRC Multi-rail grabs are similar to that of the MR Multi-rail grabs but with the added benefit of having interchangeable, modular designed comb sections. Various comb sections to suit specific rails can be combined with the same scissor mechanism. additional comb sections can be purchased separately.

A further option on the MRC is that it can be fitted with an automatic open/close device that engages the rail sections when the clamp is lifted from the rest position.

Product group: I3

### Technical data MRC

Model	Number of rails	WLL kg	Weight kg
MRC4	4	5000	200
MRC5	5	5000	230
MRC6	6	6000	265
MRC7	7	7000	295
MRC8	8	8000	330