

CH Horizontal plate clamps

Industry standard horizontal plate clamps

Working load limit (WLL) 1000 - 10000 kg

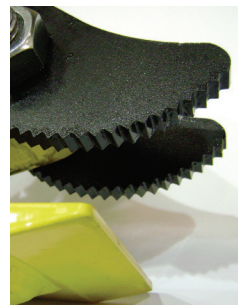
The CH horizontal plate clamps have been specifically designed to be used in pairs for the transportation of plate bundles as well as single plates with a minimum thickness of 5mm.

A pair of clamps used with a two legged chain sling are suitable for small plates. It is recommended to use two pairs in conjunction with a spreader beam for handling larger plates. These units are supplied as standard with a smooth jaw. There is also the option of hardened steel serrated jaws for special applications.

Workmanship and parts

These plate clamps are service-friendly, making it easy to exchange parts, which are readily available. Clamp repairs must be done by a trained person.

Product group: I2



***CH with serrated jaw which can only be used for single plates, NOT bundles.

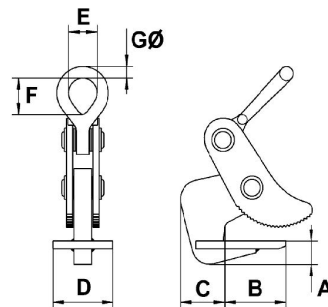
INFO

These units must not be used with endless chain slings.

The angle between the chain legs must not exceed 45° from the vertical.

The capacity applies to a pair of lifting clamps.

Chain slings are not included.



Technical data CH

Model	Art.-No.	*WLL kg	Jaw (Z) Capacity mm	A mm	B mm	C mm	D mm	E mm	F mm	G mm	*Weight kg
CH1**	N4300000041	1000	5 - 32	30	82	60	100	32	44	13	8
CH2	N50501511	2000	5 - 32	30	82	60	100	50	73	18	11
CH2L	N4300000048	2000	20 - 50	30	82	60	100	50	73	18	12
CH4	N50501512	4000	5 - 50	40	112	80	100	64	92	25	17
CH4L	N4300000052	4000	50 - 100	40	112	80	100	64	92	25	23
CH6	N50501513	6000	5 - 75	55	172	100	130	90	130	35	46
CH6L	N4300000056	6000	50 - 125	55	172	100	130	90	130	35	56
CH8	N50501514	8000	5 - 75	55	172	105	130	90	130	35	53
CH8L	N4300000060	8000	50 - 125	55	172	105	130	90	130	35	60
CH10	N50501515	10000	5 - 100	65	215	120	150	114	114	37 x 50	95
CH10L	N50501516	10000	50 - 150	65	215	120	150	114	114	37 x 50	108
CH15	N4300012878	15000	5 - 100	71	230	120	150	114	114	37 x 50	110
CH15L	N4300012879	15000	50 - 150	71	230	120	150	114	114	37 x 50	123
CH20	N4300014489	20000	5 - 100	70	220	118	220	80	120	38 x 60	165
CH20L	N4300014491	20000	50 - 150	70	220	118	220	80	120	38 x 60	172

*Per pair

**NB. CH1 is fitted with a single jaw.

***Serrated jaw option is available on request as a special order



RH/WH Horizontal plate clamps

Working load limit (WLL) 1500 - 5000 kg

This range of plate clamps have been designed to be used in pairs. For the horizontal transportation of individual and bundled plate. The RH clamps are fitted, as standard, with a steel roller to reduce any potential marking of the plate. The WH model is fitted with a serrated steel plate.

These clamps are sold and must be used in pairs. They should always be used with a two legged chain sling (not supplied).

Workmanship and parts

These plate clamps are service-friendly, making it easy to exchange parts, which are readily available. Clamp repairs must be done by a trained person.

Product group: I2

INFO

The angle from the vertical must not exceed 45°!

Technical data RH/WH

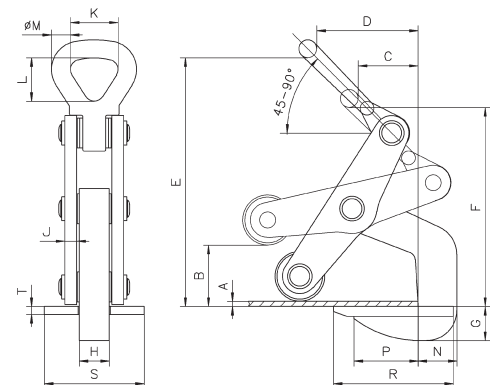
Model	Art.-No.	*WLL kg	Jaw capacity mm	**Weight kg
RH1500 with roller	N54509101	1500	5 - 60	5.6
RH2500 with roller	N54509102	2500	10 - 70	10.3
RH3500 with roller	N54509103	3500	10 - 80	13.4
RH5000 with roller	N54509104	5000	10 - 102	27.7
WH1500 with plate	N54509105	1500	5 - 60	5.7
WH3500 with plate	N54509107	3500	10 - 80	13.5

*Per pair, angle from the vertical max. 45°

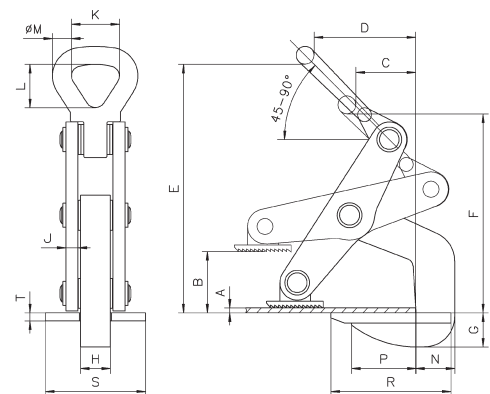
**Per unit

Dimensions RH/WH

Model	RH1500 with roller	RH2500 with roller	RH5000 with roller	RH5000 with roller	WH1500 with plate	WH3500 with plate
A, mm	5	10	10	10	5	10
B, mm	60	70	80	102	60	80
C, mm	60	75	90	110	60	90
D, mm	105	130	162	170	105	162
E, mm	250	315	345	425	250	345
F, mm	200	275	292	345	200	292
G, mm	31	45	55	57	22	48
H, mm	30	30	30	45	30	30
J, mm	12	12	15	20	12	15
K, mm	50	64	64	89	50	64
L, mm	73	92	92	130	73	92
Ø M, mm	18	25	25	35	18	25
N, mm	36	58	65	80	36	65
P, mm	65	77	105	120	65	105
R, mm	120	150	185	210	120	185
S, mm	100	100	100	120	100	100
T, mm	10	10	10	12	10	10



RH with roller



WH with plate

ACH Adjustable horizontal plate clamps

Working load limit (WLL) 1300 - 10000 kg

The ACH horizontal plate clamps offer superb flexibility because of the large adjustable jaw opening. The jaw is adjusted using a simple ratchet mechanism.

These clamps are to be used in pairs and are especially suited to the transportation of large plate bundles.

Workmanship and parts

These plate clamps are service-friendly, making it easy to exchange parts, which are readily available. Clamp repairs must be done by a trained person.

Product group: I2

INFO

The sling angle from the vertical must not exceed 45°!

The capacity applies to a pair of lifting clamps.

Use a spreader beam for larger plates.

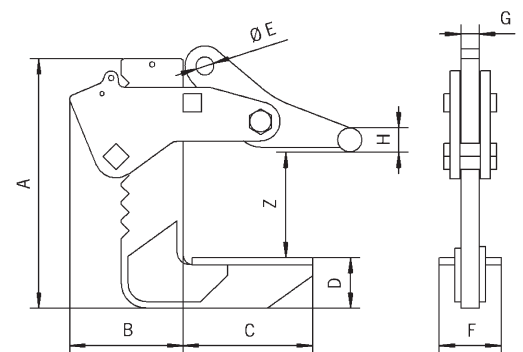
Chain slings and shackle are not included.



Technical data ACH

Model	Art.-No.	*WLL kg	Jaw capacity Z mm	*Weight kg
ACH1.3L	N50601624	1300	0 - 250	17
ACH3.3L	N50601626	3300	0 - 250	28
ACH6.6L	N50601628	6650	0 - 250	64
ACH10.0	192065646	10000	50 - 300	90

*Per pair, up to an angle of 45° from the vertical



Dimensions ACH

Model	ACH1.3L	ACH3.3L	ACH6.6L	ACH10.0
A, mm	298	321	405	495
B, mm	122	130	185	210
C, mm	160	160	210	240
D, mm	41	50	82	100
Ø E, mm	20	23	30	40
F, mm	80	80	100	120
G, mm	20	25	30	50
Ø H, mm	25	25	40	40



THK Thin sheet horizontal plate clamps

Working load limit (WLL) 40 - 9000 kg

The THK horizontal plate clamps share the same basic design features as the CH range of clamps but have a reversed tooth jaw design. This safety feature is designed for use with thin sheets which may have a tendency to deflect or sag or flex.

Suited to thin plate with a surface hardness less than 300 Brinell/32 Rockwell C

Workmanship and parts

These plate clamps are service-friendly, making it easy to exchange parts, which are readily available. Clamp repairs must be done by a trained person.

Product group: I2

INFO

The plate surface of the material being clamped must have a hardness level below HRC 30/Brinell 300.

The angle from the vertical must not exceed 30°!

Ideal clamp for thin sheets.

Shackles are not included.



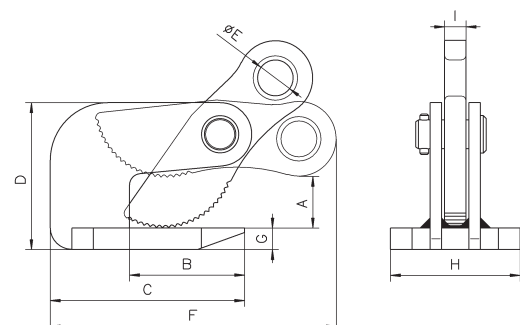
Technical data THK

Model	Art.-No.	*WLL kg	Jaw capacity mm	*Weight kg
THK750	N50701751	40 - 750	0 - 25	3
THK1500	N50701752	75 - 1500	0 - 35	6
THK3000	N50701753	150 - 3000	0 - 35	11
THK4500	N50701754	250 - 4500	0 - 45	16
THK6000	N50701755	300 - 6000	0 - 60	23
THK9000	N50701756	450 - 9000	0 - 60	35

*Per pair, angle from the vertical max. 30°

Dimensions THK

Model	THK750	THK1500	THK3000	THK4500	THK6000	THK9000
A, mm	25	36	38	48	63	65
B, mm	72	80	93	103	124	113
C, mm	118	135	168	183	214	223
D, mm	81	102	119	140	176	188
Ø E, mm	20	25	30	30	35	40
F, mm	161	198	227	238	284	317
G, mm	12	15	20	25	30	35
H, mm	86	102	110	122	110	148
I, mm	12	15	20	20	20	20



THS Loading horizontal plate clamps

Working load limit (WLL) 750 - 1500 kg

The THS horizontal plate clamps are specifically designed to be used when loading plate horizontally into presses, shears, guillotines and other industrial machines or where the CH clamps are not suitable.

The unique design of the THS allows them to be used individually when loading plate. However, when transporting plate horizontally the THS clamps should be used in pairs.

Other features of this clamp include a spring loaded safety lock that ensures the clamp remains on the plate in the unloaded position prior to lifting. Maximum plate surface hardness 300 Brinell / 32 Rockwell C.

Workmanship and parts

These plate clamps are service-friendly, making it easy to exchange parts, which are readily available. Clamp repairs must be done by a trained person.

Product group: I2

INFO

When used in pairs the angle from the vertical must not exceed 30°!



Technical data THS

Model	Art.-No.	*WLL kg	Jaw capacity mm	*Weight kg
THS750	N50801851	750	0 - 20	3.2
THS1500	N50801852	1500	0 - 35	6.1

*Per clamp

Dimensions THS

Model	THS750	THS1500
A, mm	30	38
B, mm	70	80
C, mm	130	165
D, mm	97	120
Ø E, mm	50	70
F, mm	12	15
G, mm	15	17
H, mm	255	335
I, mm	15	20
J, mm	135	165
K, mm	80	90
L, mm	40	50

