

\* Best seller



SCAN ME



## 92 Series vertical plate clamps

Standard plate clamps with safety lock

Working load limit (WLL) 50 - 3000 kg

These clamps are primarily used for transporting sheet metal and steel plates in the vertical position, as well as lifting and rotating through 180°.

They can also be used for transporting steel constructions and profiles. It is recommended to use a pair of plate clamps in conjunction with a spreader beam for long plates.

### Function

The jaw is opened and closed with the locking lever except for the 92-500 which uses a positive spring loaded cam. The safety lock spring loads the cam jaw, preventing the clamp from opening even when there is no load on the jaw.

### Workmanship and parts

These plate clamps are service-friendly, making it easy to exchange parts, which are readily available. Clamp repairs must be done by a trained person.

Product group: I2

## INFO

The plate surface of the material being clamped must have a hardness level below HRC 30/Brinell 300.

### Technical data 92 Series

Model	Art.-No.	*WLL kg	Jaw (Z) Capacity mm	**Weight kg
92-500	N50100051	50 - 500	0 - 16	1.5
92-1500	N50100056	100 - 1500	0 - 20	3.0
92-2000	N50100057	200 - 2000	0 - 32	8.0
92-3000	N50100058	300 - 3000	0 - 32	12.0

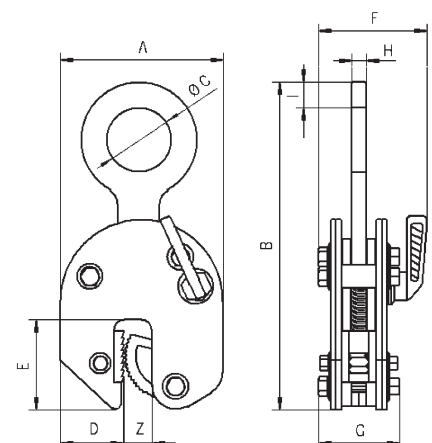
PLEASE NOTE: Units are supplied as a standard with a hook ring. Link fitting and chain are available on request as a special order

\*Per clamp

\*\*Weight per clamp with hook ring / Standard length of chain = 4-6 links

### Dimensions 92 Series

Model	92-500	92-1500	92-2000	92-3000
A, mm	99	126	192	192
B, mm	195	225	312	320
Ø C, mm	29	50	80	80
D, mm	33	49	75	75
E, mm	47	70	96	96
F, mm	50	82	100	100
G, mm	48	55	81	81
H, mm	11	13	20	30
I, mm	15	20	24	30



## CZ Vertical plate clamps

Heavy duty plate clamps with safety lock

Working load limit (WLL) 100 - 30000 kg

These clamps are primarily used for transporting sheet metal and steel plates in the vertical position, as well as lifting and rotating through 180°.

They can also be used for transporting steel constructions and profiles. It is recommended to use a pair of plate clamps in conjunction with a spreader beam for long plate.

### Function

The jaw is opened and closed with the locking lever.

The safety lock spring loads the cam jaw, preventing the clamp from opening even when there is no load on the jaw.

### Workmanship and parts

These plate clamps are service-friendly, making it easy to exchange parts, which are readily available. Clamp repairs must be done by a trained person.

Product group: I2



Welded shell construction

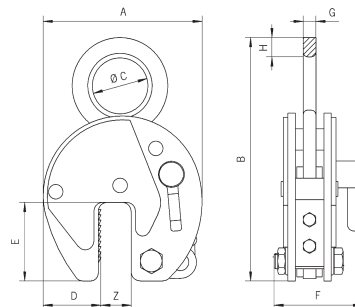


SCAN ME

## INFO

The plate surface of the material being clamped must have a hardness level below HRC 30/Brinell 300.

Product group: I2



### Technical data CZ

Model	Art.-No.	*WLL kg	Jaw (Z) Capacity mm	A mm	B mm	C mm	D mm	E mm	F mm	G mm	H mm	**Weight kg
CZ 1	N4300000092	100 - 1000	0 - 20	140	254	51	48	70	83	13	19	4
CZ 2	N4300000107	200 - 2000	0 - 32	197	323	67	68	93	110	20	10	9
CZ 3	N4300000115	300 - 3000	0 - 32	197	371	80	68	93	110	20	30	10
CZ 4	N501000005	400 - 4000	0 - 32	197	371	80	68	93	129	20	30	10
CZ 4L	N501000006	400 - 4000	30 - 60	228	390	80	68	93	129	20	30	12
CZ 6	N501000021	600 - 6000	0 - 50	293	484	89	95	143	129	25	35	21
CZ 6L	N501000008	600 - 6000	50 - 100	362	524	89	95	143	129	25	35	28
CZ 8	N501000022	800 - 8000	0 - 50	293	492	89	95	143	129	25	42	26
CZ 8L	N501000023	800 - 8000	50 - 100	362	524	89	114	143	129	25	42	32
CZ 10	N501000024	1000 - 10000	0 - 50	293	545	110	95	143	139	25	45	30
CZ 10L	N501000025	1000 - 10000	50 - 100	362	545	110	114	143	139	25	45	37
CZ 15	N501000015	1500 - 15000	0 - 50	360	613	130	125	162	204	45	55	75
CZ 15L	N501000016	1500 - 15000	50 - 100	460	678	130	175	162	204	45	55	88
CZ 20	N501000017	2000 - 20000	0 - 65	462	755	130	165	210	235	45	65	123
CZ 20L	N501000018	2000 - 20000	65 - 130	560	805	130	195	210	235	45	65	136
CZ 30	N501000019	3000 - 30000	0 - 65	462	732	60	165	210	295	65	-	195
CZ 30L	N501000020	3000 - 30000	65 - 130	560	797	60	195	210	295	65	-	295

PLEASE NOTE: Units are supplied as standard with a hook ring. Link fitting and chain are available on request as a special order except CZ30/L which is supplied with the link as standard.

\*Per clamp

\*\*Weight per clamp with hook ring / Standard length of chain = 4-6 links



Hinged hook ring



## CY Hinged vertical plate clamps

Working load limit (WLL) 100 - 3000 kg

The CY plate clamps with hinged hook rings can be used for the safe handling of plate at various angles. It can lift plate from the horizontal and put it down in the vertical. The hinged hook ring ensures adequate gripping pressure in every position, but the load capacity reduces. See the diagram below showing the load / force capacities.

The main benefit of the CY hinged plate clamps is that longer plates can be lifted or handled, using two clamps on a two legged chain sling, thus eliminating the need for a spreader beam.

### Workmanship and parts

These plate clamps are service-friendly, making it easy to exchange parts, which are readily available. Clamp repairs must be done by a trained person.

Product group: I2

## INFO

The plate surface of the material being clamped must have a hardness level below HRC 30/Brinell 300.

Must be used in pairs

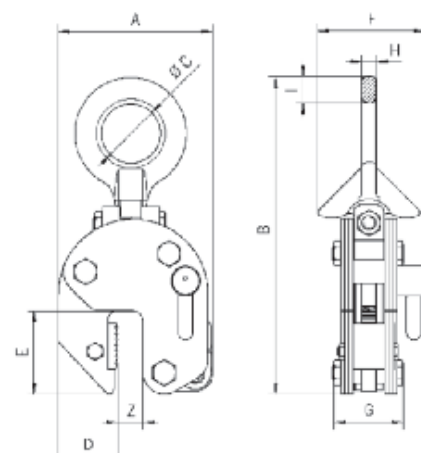
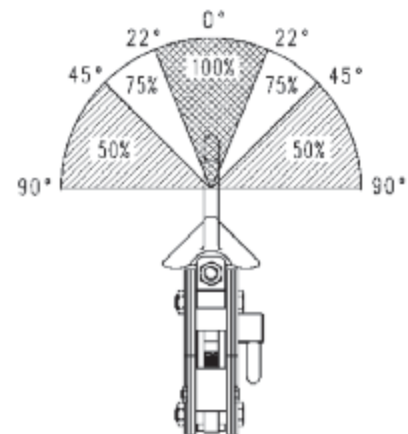
### Technical data CY

Model	Art.-No.	*WLL kg	Jaw capacity Z mm	*Weight kg
CY1	N50200312	1000	0 - 20	4.6
CY2	N50200313	2000	0 - 32	14
CY3	N50200314	3000	0 - 32	14

\*Per clamp

### Dimensions CY

Model	CY1	CY2	CY3
A, mm	126	192	192
B, mm	270	382	382
Ø C, mm	50	80	80
D, mm	49	75	75
E, mm	70	96	96
F, mm	95	132	132
G, mm	63	92	92
H, mm	12	20	20
I, mm	23	30	30



## CX Hinged vertical plate clamps

Heavy duty - side loading

Working load limit (WLL) 150 - 10000 kg

The CX plate clamps share all the benefits of the CY clamps but are specifically designed for more heavy duty applications.

The other benefit that the CX clamp offers over the CY is that vertically racked plates can be turned through 90°.

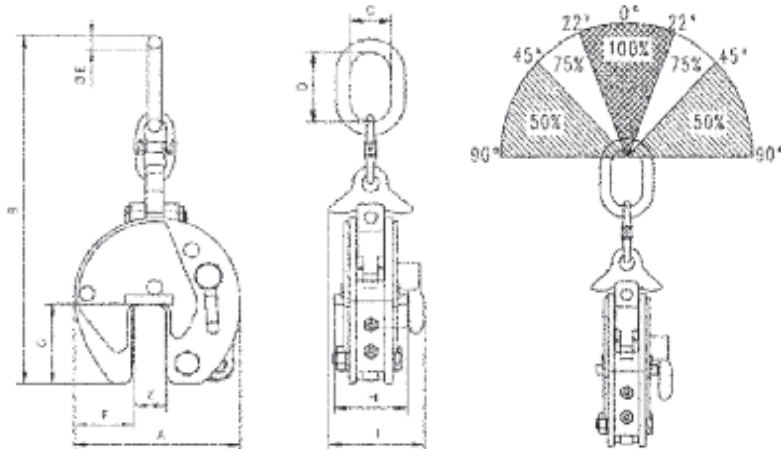
### Workmanship and parts

These plate clamps are service-friendly, making it easy to exchange parts, which are readily available. Clamp repairs must be done by a trained person.

Product group: I2

## INFO

The plate surface of the material being clamped must have a hardness level below HRC 30/Brinell 300.



### Technical data CX

Model	Art.-No.	*WLL kg	Jaw (Z) Capacity mm	A mm	B mm	C mm	D mm	E mm	F mm	G mm	H mm	I mm	*Weight kg
CX1500	N4300000080	150 - 1500	0 - 20	140	399	63	125	12.5	48	70	57	83	7
CX3000	N4300000082	300 - 3000	0 - 32	197	515	67	138	19	68	93	81	110	12
CX3000L	N4300000083	300 - 3000	30 - 60	227	515	67	138	19	68	93	81	110	15
CX6000	N50200305	600 - 6000	0 - 50	292	737	95	176	28	95	143	137	188	38
CX6000L	N50200306	600 - 6000	50 - 100	367	785	98	180	28	115	143	135	188	48
CX8000	N50200307	800 - 8000	0 - 50	292	737	98	176	28	95	143	136	210	39
CX8000L	N50200310	800 - 8000	50 - 100	367	785	98	180	28	115	143	136	210	51
CX10000	N50200308	1000 - 10000	0 - 50	360	903	110	195	33	125	162	170	223	61
CX10000L	N50200311	1000 - 10000	50 - 100	446	921	112	195	33	168	162	170	223	76

\*Per clamp





## HG High grip vertical plate clamps

**Working load limit (WLL) 25 - 500 kg**

The HG plate clamp has an extremely high clamping force which makes the clamp particularly suited to the transport of a plate with a surface hardness up to HRC 40/Brinell 375.

### Function

This clamp is opened and closed with a locking lever. The safety lock spring loads the cam jaw, preventing the clamp from opening even when there is no load on the jaw.

### Workmanship and parts

These plate clamps are service-friendly, making it easy to exchange parts, which are readily available. Clamp repairs must be done by a trained person.

**Product group: I2**

## INFO

The min. load is 5% of the nominal WLL!

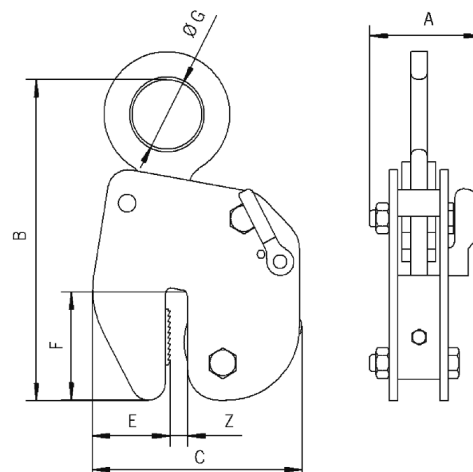
### Technical data HG

Model	Art.-No.	*WLL kg	Jaw (Z) Capacity mm	*Weight kg
HG500	N4300000175	25 - 500	0 - 10	5

\*Per clamp

### Dimensions HG

Model	HG500
A, mm	42
B, mm	230
C, mm	148
D, mm	10
E, mm	55
F, mm	79
G, mm	50



## TJC Twin jaw vertical plate clamps

Working load limit (WLL) 10 - 300 kg

The TJC twin jaw vertical plate clamps have been specifically designed for lifting materials with low minimum weight but large thickness. The main difference between the TJC and the 92 Series (which is our standard vertical plate clamp) is that the TJC has a unique twin moving jaw arrangement.

### Workmanship and parts

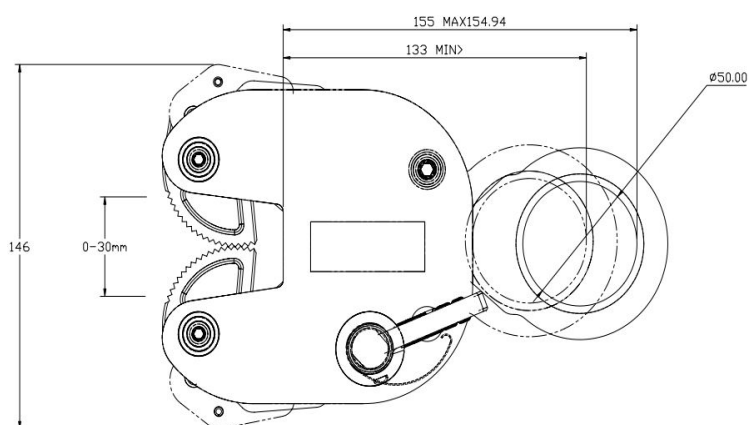
These plate clamps are service-friendly, making it easy to exchange parts, which are readily available. Clamp repairs must be done by a trained person.

Product group: I2

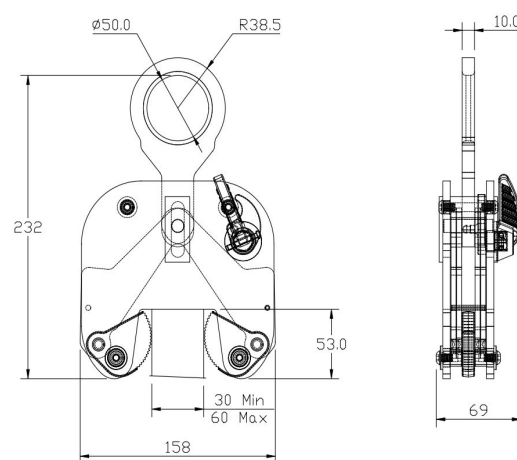


## INFO

The plate surface of the material being clamped must have a hardness level below HRC 30/Brinell 300.



TJC300



TJC300L

### Technical data TJC

Model	Art.-No.	*WLL kg	Jaw (Z) Capacity mm	*Weight kg
TJC300	N4300000354	10 - 300	0 - 30	3
TJC300L	N4300000355	10 - 300	30 - 60	3

\*Per clamp



Quick open lever



TWG modified side plates for use in confined spaces (e.g. lathe machine).

## TAG Wide jaw vertical clamps

Working load limit (WLL) 350 - 5000 kg

## TWG Modified side plates

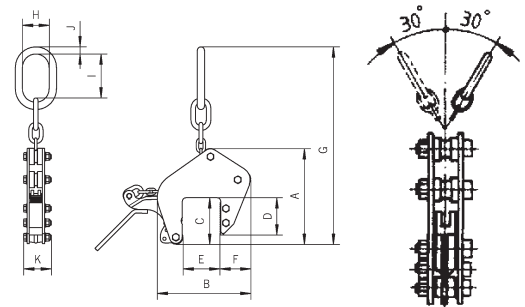
Working load limit (WLL) 750 - 1250 kg

The TAG vertical clamps are extremely versatile. They have a large jaw capacity that enables them to be used on a multitude of applications such as loading machine tools, steel constructions, welding and numerous assembly functions. The design means that they do not require additional chain slings and are very easy and simple to use.

The automatic gripping force is retained by a positive tension jaw spring, even if there is slack in the chain. The clamps are also fitted with a 'Quick-Open' lever for ease of loading and unloading.

The TWG vertical grab (shown left) is a variation of the TAG. It is specially designed with a small outside measurement for use on hard to reach places such as loading billets on to a lathe etc.

### Product group: I2



### Technical data TAG/TWG

Model	Art.-No.	*WLL kg	Jaw (Z) Capacity mm	A mm	B mm	C mm	D mm	E mm	F mm	G mm	H mm	I mm	J mm	K mm	*Weight kg
TAG750/100	N50300803	75 - 750	0 - 100	264	259	128	100	100	85	550	75	121	20	83	9
TAG750/200	N50300804	75 - 750	90 - 200	382	434	195	156	200	120	760	75	121	20	90	15
TAG1250/100	N50300805	125 - 1250	0 - 100	320	289	128	100	100	85	570	75	121	20	83	15
TAG1250/200	N50300806	125 - 1250	90 - 200	382	434	195	156	200	120	760	75	121	20	90	26
TAG2000/100	N50300807	200 - 2000	0 - 100	328	415	135	115	100	105	571	75	121	20	105	22
TAG2000/200	N50300808	200 - 2000	90 - 200	375	515	195	165	200	160	750	75	121	20	105	30
TAG3000/90	N50300809	300 - 3000	5 - 90	297	290	136	106	90	91	570	82	111	32	137	25.5
TAG5000/90	N50300810	500 - 5000	5 - 90	297	290	136	106	90	91	570	82	111	32	147	30
TWG750/100	N50300821	75 - 750	30 - 100	264	209	128	100	100	35	550	75	121	20	83	11
TWG750/200	N4300003549	75 - 750	100 - 200	382	354	195	156	200	40	760	75	121	20	90	16
TWG1250/100	N50300822	125 - 1250	30 - 100	320	255	128	100	100	51	570	75	121	20	83	16
TWG1250/200	N50300824	125 - 1250	100 - 200	382	374	195	156	200	60	760	75	121	20	90	23

\*Per clamp

## LJ Non-marking plate clamps

**Working load limit (WLL) 25 - 1500 kg**

The LJ non-marking plate clamps are designed for lifting, turning, and transporting of structural steel plates, stainless steel, iron, timber and aluminium without marking, damaging or leaving indentations on the surface. It can also be used for steel plates with extremely hard surfaces.

These clamps are available with two different types of pads, rubber or leather. The type to be used is dependant on the surface of the material being gripped. If you have any concerns regarding the best options for your application, please contact our sales team for advice.

### Workmanship and parts

These plate clamps are service-friendly, making it easy to exchange parts, which are readily available. Clamp repairs must be done by a trained person.

**Product group: I2**



## INFO

The surface of the material being gripped must be free of oil, grease or any other liquid to ensure safe transport.



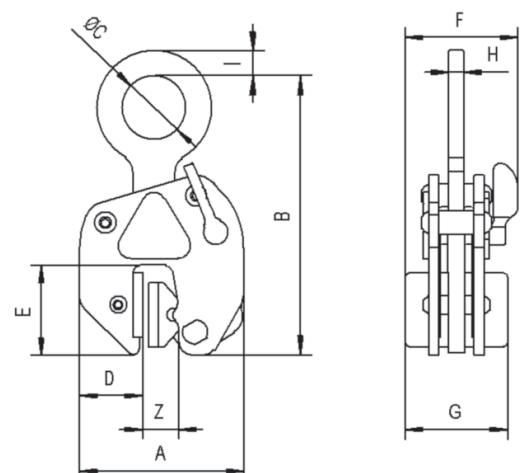
### Technical data LJ

Model	Art.-No.	*WLL kg	Jaw capacity Z mm	*Weight kg
LJ500 (leather)	N4300000185	25 - 500	0 - 10	3.5
LJ1500 (leather)	N4300000182	150 - 1500	0 - 20	12
LJ500 (rubber)	N51502419	25 - 500	0 - 10	3.5
LJ1500 (rubber)	N51502420	150 - 1500	0 - 20	12

\*Per clamp

### Dimensions LJ

Model	LJ500	LJ1500
A, mm	127	215
B, mm	200	345
C, mm	50	85
D, mm	52	75
E, mm	69	135
F, mm	86.5	131
G, mm	76	118
H, mm	13	20
I, mm	20	24







## TSB Non-marking friction plate clamps

**Working load limit (WLL) 40 - 1250 kg**

The TSB non-marking plate clamps with chain are designed for vertical lifting and transporting of plate material. This particular range of clamps has a large jaw capacity that enables it to be used on a multitude of applications.

The main feature of the TSB plate clamps is the fact that it is non-marking. It works through the process of friction, which is achieved by a special material on the jaw and pad which is similar to brake linings.

Another benefit of the TSB, is that one grab can be used for lifting different materials such as concrete, wood, stone, and hardened steel.

### Workmanship and parts

These plate clamps are service-friendly, making it easy to exchange parts, which are readily available. Clamp repairs must be done by a trained person.

**Product group: I2**

## INFO

The surface of the material being gripped must be free of oil, grease or any other liquid to ensure safe transport.

### Technical data TSB

Model	Art.-No.	*WLL kg	Jaw capacity Z mm	*Weight kg
TSB750/65	N51202202	40 - 750	0 - 65	9
TSB1250/65	N51202203	125 - 1250	0 - 65	12

\*Per clamp

### Dimensions TSB

Model	TSB750/65	TSB1250/65
A, mm	270	270
B, mm	260	260
C, mm	128	128
D, mm	100	100
E, mm	65	65
F, mm	78	78

